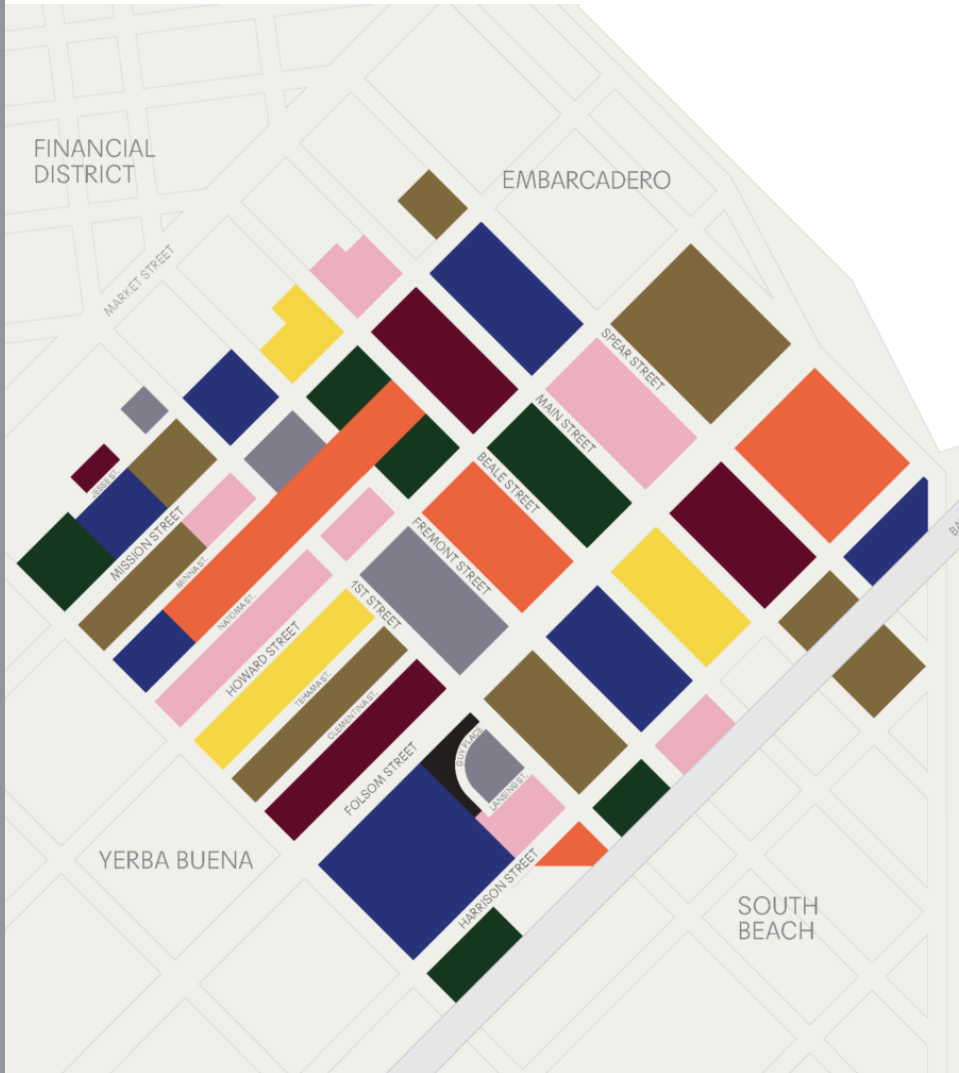


Operations Report

June 2024

Prepared by: Block by Block
for The East Cut Community Benefit District



Highlights



Trash

9,000
lbs. of trash

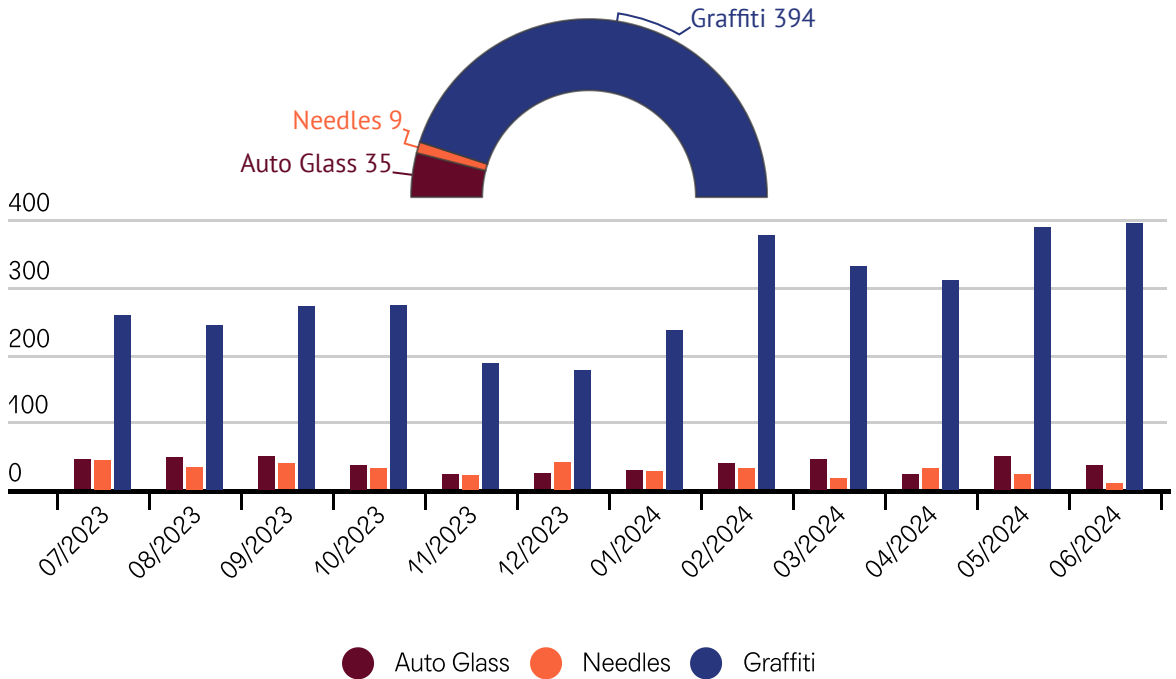


59,550
lbs.YTD



Meet Gabriel Gonzalez Picazo, our newest member of the East Cut CBD services team! Let's give him a warm welcome!

Quality of Life Cleaning



Zones Pressure Washed

1,2,4,5

See pressure washing map [here](#).



This map shows all of the feces removed by The East Cut services team in the past month.

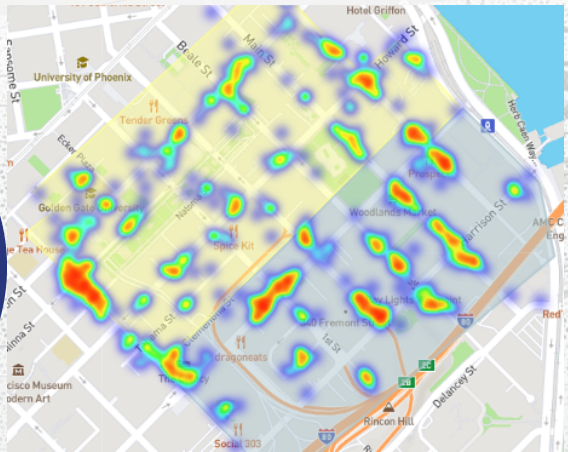
Overnight Safety



June
7 Calls

April
16 Calls

May
11 Calls



Overnight Safety Business contacts. The red marked areas on the heat map indicate that the surrounded properties are visited more frequently.

Calls for service

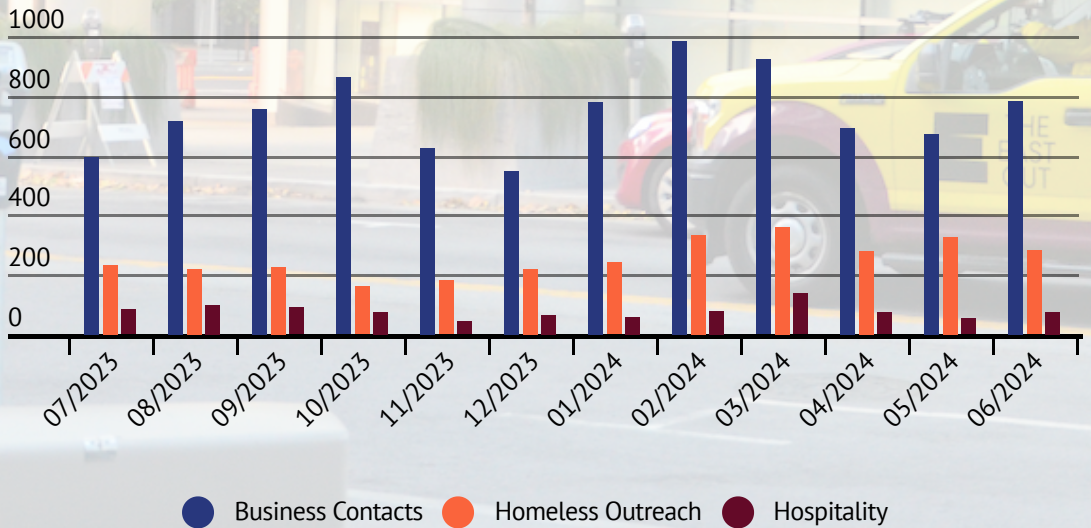
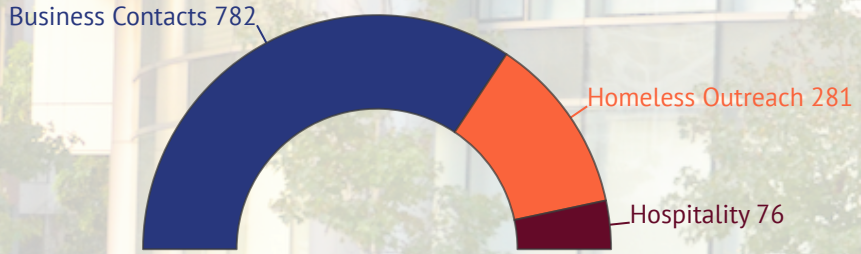


June average
unhoused
sleepers

12.5

During late hours, the overnight Safety team conducts welfare checks and business contacts with various buildings throughout the neighborhood.

Hospitality



Dispatch



Calls Received - 88

Text/Direct Message Received
-23

Emails Received - 53

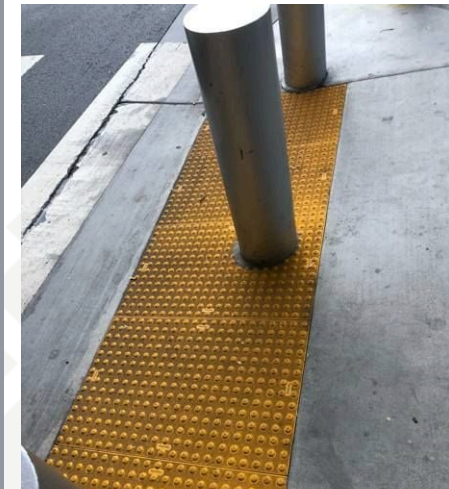


311 Requests
from City
18



311 Requests
to City
84

Before & After



ADA tiles are rarely cleaned regularly but must always be visible. The East Cut CBD services team makes sure the tiles stay clean and easy to see for all pedestrians.



The vacant property at 555 Howard sometimes gets graffiti tags. While many properties who have janitorial staff would remove the tags, the East Cut services team will work with property management that do not have any onsite janitorial services to make sure they are removed or covered up.

Meet The Team

CLEANING TEAM

Dwight



Robert



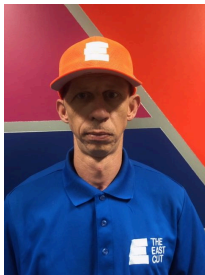
Jerry



Juan



Nicholas



Lorenzo



Zain



Dennis



Gabriel

SAFETY TEAM

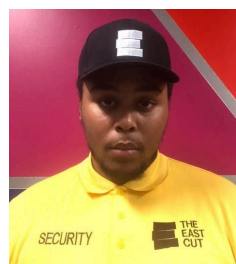
Jordan



Masen



Andrew



Brandon



Meet The Team

DISPATCH TEAM

Miracle



Rene



Dawanna
(Photo Pending)

TEAM LEADERS

Mario



Norman



James C ("JC")



Juan



Robert P



James
Operations Manager



Robert W
Operations Supervisor

